



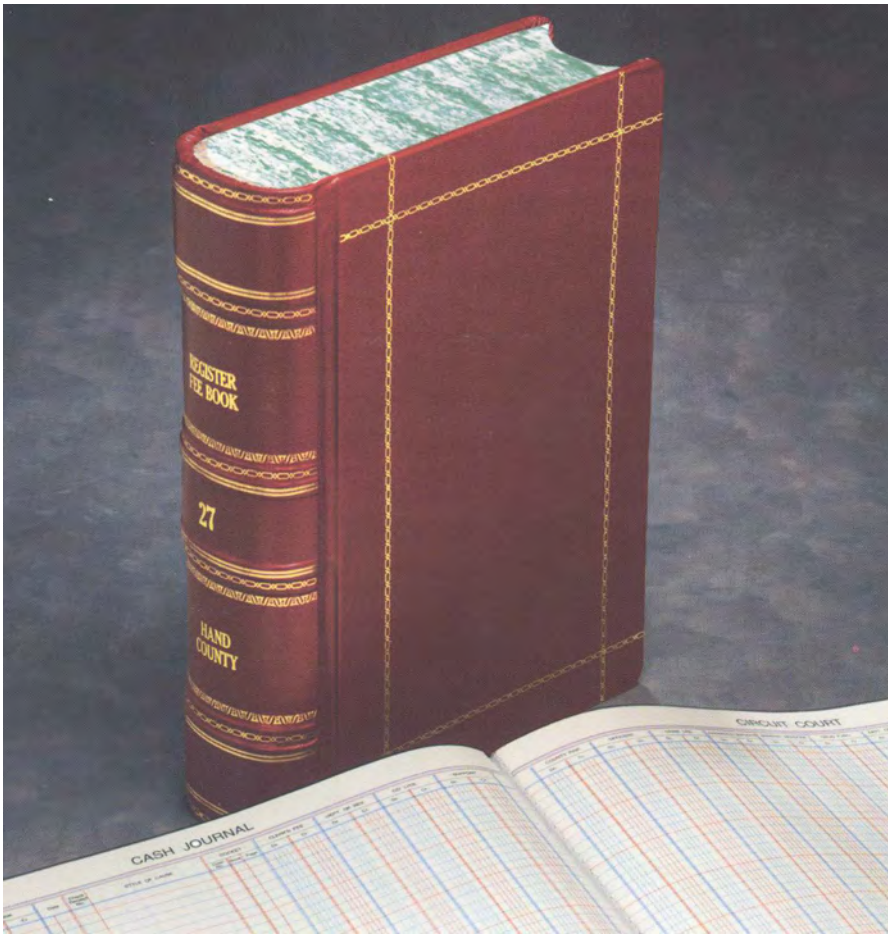
1119 LaSalle St.
Ottawa, IL 61350
815-434-1086
815-434-2665 - Fax
info@electprint.com
www.illinoisofficesupply.com

ILLINOIS OFFICE SUPPLY
presents



Bound Books

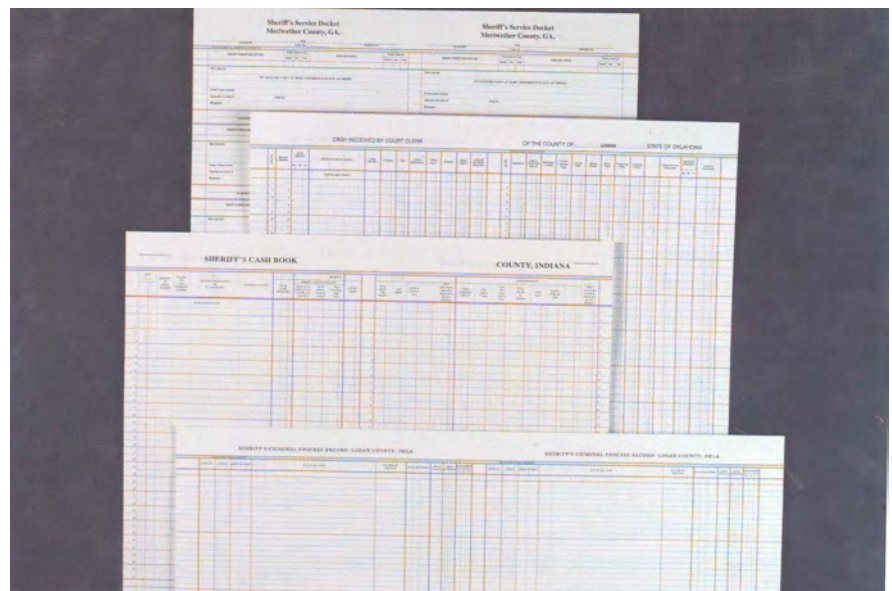
BOUND BOOKS



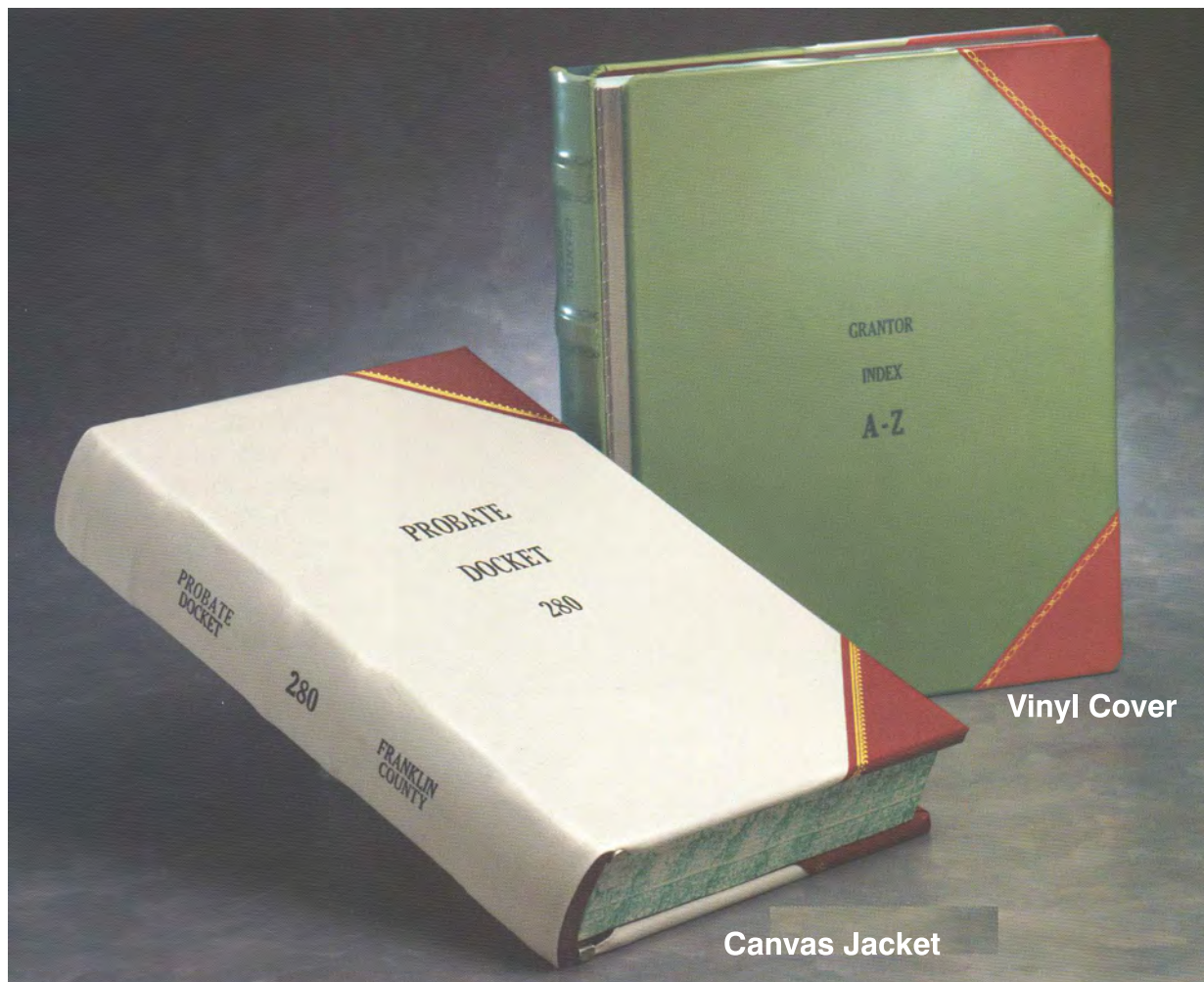
Enduro "craftsmen" produce the finest bound record books available today. Whether they are "full bound" (completely bound in leather) or "3/4 bound" (leather spine & corners, imitation leather side panels) the signatures are sewn "on guard" for a true "flat opening" book. Smyth sewn bound books are also available in two styles, "1/2 bound" (flexible spine w/o hubs) and "5/8 bound" (rigid, curved spine with or w/o hubs.) All Enduro bound books use Byron Weston 100% linen ledger paper, exclusively, and is ruled and printed (usually 3 color ruling with black text) to your customer's specifications, with a maximum sheet size of 19" x 96". One, two, and three color forms can also be printed, and crisp, colored case numbers and paging can be done "in line" for quality and accuracy. Various indexes and protective canvas jackets are also available. From the hand binding and sewing, to the hand applied gold tooling and lettering, Enduro book binders create the best Bound Book value, Period! Please call or write for price quote and lead-time. (usually 3-4 weeks)

RULED AND PRINTED SHEETS

Ruled and printed filler sheets are like those used in our Bound Books, except that these are individual sheets for use in Enduro "loose leaf" record binders. Each filler is custom ruled and printed to your customer's specifications. They typically have three colors of ruling with black text, although 1, 2, & 3 color forms can also be printed. Crisp, colored case numbers and paging can be done "in line" for quality and accuracy. We use Byron Weston 100% linen ledger paper exclusively, in either 32 or 36 sub., in sheet sizes up to 19" x 96", with your choice of punching and green edging. Please call or write for price quote and lead-time. (usually 2-3 weeks)



CANVAS JACKETS AND VINYL COVERS



Canvas jackets and vinyl covers protect the valuable fine bindings of record and index books from constant wear and tear of day-to-day use. Enduro long lasting jackets and vinyl covers are an easy and inexpensive way to renew the appearance of old record books, too. All canvas jackets have gold tooled corners.

INSTRUCTIONS FOR ORDERING ENDURO CANVAS JACKETS OR VINYL COVERS

When ordering replacement covers use previous order no. when possible. For canvas jackets made to your specifications, please give the following information, 1 thru 5. If a vinyl cover is to go over an existing canvas jacket, measure book with jacket on.

1. Length of cover board _____"
2. Total thickness of book, including boards _____"
3. From front edge of board, to opposite front edge of board, over the highest hub (see right*) _____"
- 3A. From front edge of board, to opposite front edge of board, over lowest part of spine (for books without hubs) _____"
4. Thickness of cover board _____"
5. Width of board – Outer edge to beginning of hinge area _____"

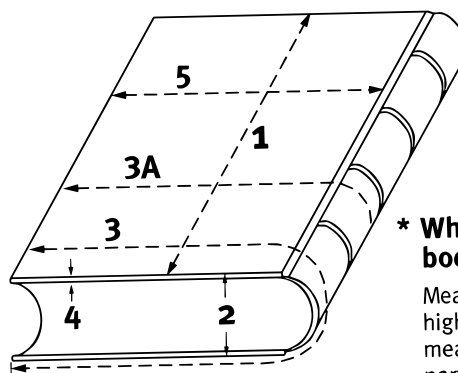
NOTE: Order forms are available at no charge.

Tailor made Canvas Jackets Options

White extra heavy 18 oz. canvas available
Lettering Available

Vinyl Cover

Standard sizes
Tailor made sizes



* When measuring books with hubs

Measure over the highest hub (3) and measure over the lowest part of spine (3A).

PAPER



Standard two column ruled or plain paper

Stock Sizes

(A-Z, 27 div., A-A or A-B tab)

Reinforced binding edge

Fifty Subdivision

Monthly tabbed (Jan. thru Dec.)

Special (loose) index tabs

(3/4"-3 1/2" in length, includes lettering, both sides same)

Protective (gummed) shields

Indestructo (Poly) indexes

A-A Tabs (allow for 3/8" index thickness)

Stock Sizes

18" x 16", 15", 14", 13" 12" or 11 1/2"

17" x 14", or 16" x 10 1/2"

8 1/2" or 9" x 16", 15", 14" or 11"

Beaver Tag Cloth indexes

Stock Sizes

(A-Z) div., A-A or A-B Tab)



Choice of Tabs styles (metal edge tabs are used unless otherwise specified)

RULED SHEETS

Divider sheets

Standard divider (buff paper) with letter tab

Beaver Tag Cloth or Perma-flex with lettered tab

Enduro (poly) divider (heavy duty) with lettered tab

Please write for prices on special items not listed.



Byron Weston Xerographic (Bright White) 100% Cotton (Rag) Paper

These papers are specifically designed for permanent records, when archival quality is required. Xerographic papers are ideal for photocopying and are sold by the ream (500 sheets). All papers are cut to size with your choice of hole punching and corners.

Sizes

All sizes available in Sub. 24, Sub. 28, Sub. 32 and Sub. 36

14" x 8 1/2" or smaller
9" x 16" or smaller
16" x 10 1/2" or smaller
18" x 11 1/2" or smaller

Options:

100 or more reams, call or write for prices.

Green Edge (speckled or solid edge)

Paging (consecutive numbering of sheets)

Byron Weston Linen Ledger

(17" x 14") size available

Individually packed in corrugated boxes

Byron Weston 100% Linen Ledger Sheet Capacity Chart

Capacity	32 Sub.	36 Sub.
1 1/4"	360 pages	320 pages
1 1/2"	440 pages	400 pages
*1 3/4	520 pages	480 pages
*2"	600 pages	560 pages
*2 1/4"	680 pages	640 pages
*2 1/2"	760 pages	720 pages
*2 3/4"	840 pages	800 pages

Byron Weston Xerographic Sheet Capacity Chart

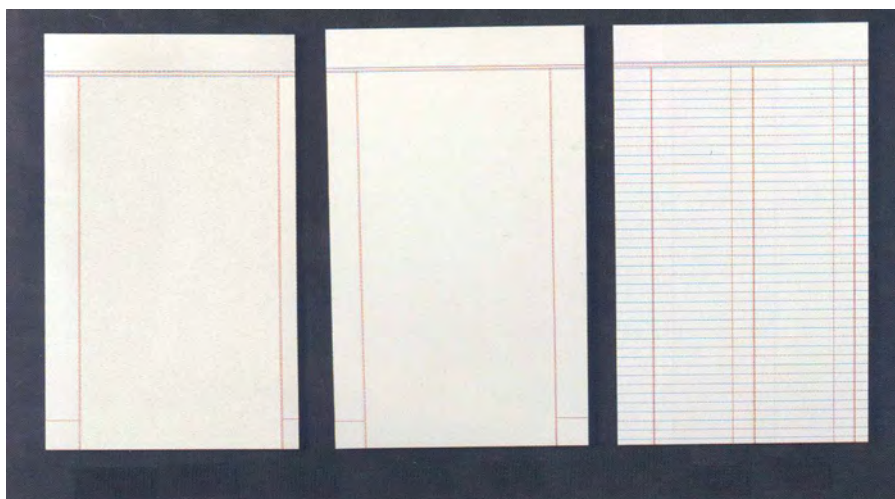
Capacity	24 Sub.	28 Sub.	32 Sub.	36 Sub.
*1 3/4"	770 pages	670 pages	620 pages	560 pages
*2"	890 pages	770 pages	700 pages	640 pages
*2 1/4"	1,010 pages	870 pages	780 pages	720 pages
*2 1/2"	1,130 pages	970 pages	860 pages	800 pages
*2 3/4"	1,250 pages	1,070 pages	940 pages	880 pages
*3"	1,370 pages	1,170 pages	1,020 pages	960 pages

Paper capacities are figured to include index and endsheets with endtins.

*1 3/4" through 3" are stock.

NOTE: The actual number of pages in each capacity may vary. This is due to a variance in paper thickness or swelling of the paper from copying process.

RULED SHEETS



We sell journal, marginal and index ruled, Byron Weston, 100% linen record paper by the sheet or ream. All paper cut to size with choice of punching, corners and colored edges.

Stock Size Journal, Marginal or Index ruled paper

Paging available